

Full Range ROV Services



Mer Terre Association (**IMCA**).

Mer Terre owns and operates a wide range of ROV systems from small “swimming Camers” observation class ROVs through Survey and light work class ROV’s to 150hp Work Class ROV

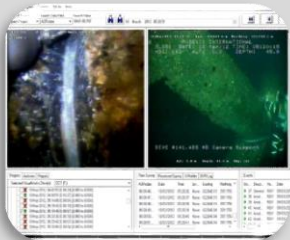
ROV systems are operated and maintained according to the following list and other regulations that may be required by clients:

- IMCA R004 - Code of Practice for the Safe and Efficient Operation of Remotely Operated Vehicles
- AODC 035 - Code of practice for the safe use of electricity under water
- IMCA C 005 - IMCA guidance on competence assurance & assessment – Guidance document and competence tables – Remote Systems & ROV Division
- IMCA R 002 - Entry level requirements and basic introductory course outline for new remotely operated vehicle (ROV) personnel
- IMCA R 005 - High voltage equipment – safety procedures for working on ROVs
- IMCA R 011 - The initial and periodic examination, testing and certification of ROV handling systems



We envisage to supply our clients with the best, cost & time effective, high quality project products by utilizing our innovative ideas, experience and capabilities. And to be the “One Stop “ solution for your offshore project requirements.

Selected Reference Projects



Tamar Field Development

Supply of 150hp work class ROV for drill support, inspection and intervention at the Tamar and Leviathan field development. Water-depth up to 1,800m. The vehicle was operated from an Mer Terre DP/II Platform Support vessel. Project duration 3 years.

Noble Energy Inc’

The work included flange installations, flying leads replacement, cable detection surveys, sub-sea trees installation, acoustic transponders installation and retrieval and various survey/inspections



Drill Support

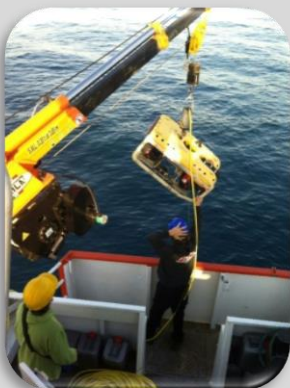
Drill Support observation class ROV services, the Seaeye Falcon ROV was operated from on-board the Mari-B Platform.

Noble Energy Inc

EBS Visual surveys

Visual Video Survey of sub-sea habitats at location of Yam 3 drilling, the operation repeated for pre/post survey

Shemen Drilling



30” Israeli Gas Transmission Pipeline

Periodical surveys along the 95km 30” pipeline including pipe/cable tracker, CP probe and dual head pipe profiling Sonar.

INGL

30” Mari-B Export Pipeline

Periodical surveys along the 95km 30” pipeline including pipe/cable tracker, CP probe and dual head pipe profiling Sonar

Noble Energy Inc’



Full Range ROV Services

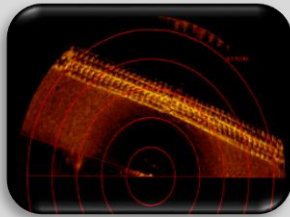
Owned ROV Systems



SDM Quasar 3,000m rated 150hp Work Class ROV with full ROV DP system, 2 X 7func manipulators, HD camera, Survey expansion sub-sea telemetry with available serial ports and Ethernet for client equipment and survey dedicated fiber. The system has a top hat TMS with 4,000m umbilical and 400m tether in the TMS pool.



Remora II 6,000m rated 25hp Survey/light work class ROV 2 X 7func manipulators, HD camera, Survey expansion sub-sea telemetry, free swimming with 6,000m umbilical on the winch.



Seaeye Falcon 300m rated inspection class ROV, with HD Camera, Single function Manipulator, 5 func. HydroLek manipulator skid and special fabricated tooling and sampling baskets. 400m tether on winch for free swimming operations

Sub Atlantic Navajo 300m rated inspection class ROV, with HD Camera, Single function Manipulator, Laser scaler. 400m tether on winch for free swimming operations

Video Ray 150m rated PRO GTO version Observation class ROV with upgraded motor power and single function grabber



Owned ROV Tooling and Accessories

- Conan & Atlas schilling manipulators
- Hydrolek Camera booms
- Subsea telemetry and survey expansion
- Kongsberg MS1000 HD Sonar system
- HD Video Cameras
- VisualSoft Data Acquisition and video management
- CP Probes, Flooded Member Detection Probes
- TSS 440 pipe/Cable detection
- Sea-Squirt high pressure intervention pump
- Torque Tools
- Various seabed sampling and water sampling



Please contact us for a detailed list of available equipment and "tailor made" solution for your project requirements.