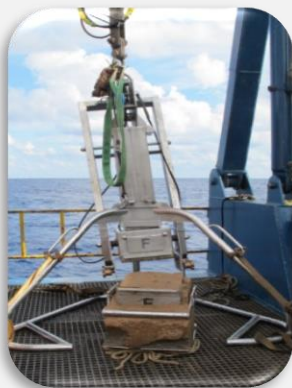


Geophysical & Geotechnical Surveys



Mer Terre is operating under **ISO 9001:2008** accreditations and a member of the International Marine Contractors Association (**IMCA**). As such, our survey projects are performed by our own highly experienced survey personnel and according to our in-house developed QA/QC Plan. Our survey department includes professional survey personnel that are also Qualified ISO internal auditors. Due to the above, our surveys considered top quality for determining existing situation of sub-sea assets, base line for future reference and base for engineering purposes.

With The developing Offshore Energy arena in the eastern Mediterranean, water desalination plants and commercial ports expansion growing demand for environmental and GeoHazard surveys Mer Terre became the only local company that fully owns and regularly operates the required equipment to the satisfaction of our many clients have significantly increased our capabilities and participants in offshore EBS and environmental monitoring surveys .

We envisage to supply our clients with the best, cost & time effective, high quality project products by utilizing our innovative ideas, experience and capabilities. And to be the “One Stop “ solution for your offshore project requirements.



Selected Reference Projects

Pre/Post Drill Surveys

Noble Energy Inc'

Pre and Post drill EBS surveys of various drill sites at the water depths of 1,000m to 1,800m. Various surveys since 2011 Including pre-rig positioning geo-hazard surveys



New Ports Development

Israel Ports Company (IPC)

The IPC is in planning and engineering stage of the expansion project of the two main ports, Haifa and Ashdod. For this purpose, EDTMC is providing geophysical and geotechnical surveys of the new ports areas, the surveys includes all aspects of the work: SSS, SBP, MAG, Soil Sampling and Coring .

Cyprus Block 12

Noble Energy Inc'

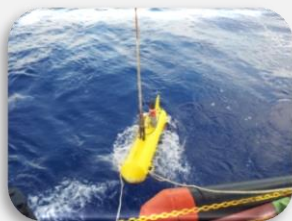
The Cypriot Block 12 field development is located at water depth of 1,700m south east of Cyprus. EDTMC have provided Geo-hazard surveys before each drilling operation since 2011. these surveys included archeology reports and seabed habitat report.

Aphrodite Field Development

Genesis Energy

Shallow geotechnical pre-drill survey at water depth of 1,800m. Deploying for the first time our company developed sub-sea telemetry supplying depth and altitude of the box-corer, resulting in 100% success rate of sample retrieval.

Please contact us for a full detailed list of projects and more information about our survey services, equipment, projects and client references .

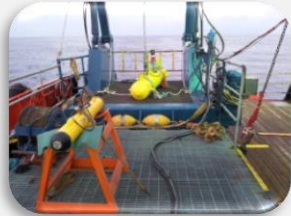


Geophysical & Geotechnical Surveys

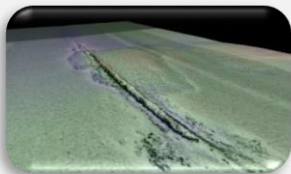
Owned Major Equipment



SSS - CM2 DeepTow Towfish an ROV/AUV 2000m Rated
Edgetech 4100. 1,000m rated
Imagenex Yellow Fin 300m rated
KONGSBERG Side Scan Transducer for EA400P



SBP - Edgetec 216S Towfish
GeoPuls 200 Single-channel sparker
Geeel Multi-channel streamer



Mag - Geometrics G-881
PULSE 10 Boat towed metal detector
PULSE 8X Hand Held Detectors



Soil Sampler - GC-150 Drop Corer
OSIL Viber Corer 9m cores, 600 m Rated
SPARTEL Box Corer 0.1 m²
Van Veen Grab – 2000 cm²

Please contact us for further information and tailor-made solution for your project requirements

